

On a New and Interesting Spider.

By GEO. MARX, M. D.

Washington, D. C.

The family *Pholcidae* has been hitherto placed in close relation with the *Theridiidae*, but the peculiar structural characters of this small but well marked family have made this affinity doubtful to some of our systematists. In fact, the right place for the *Pholcidae* has not been found so far, and all our modern arachnologists content themselves with leaving it where it was, near the *Theridiidae*. Dugès alone placed it with *Filistata*, but for what reason I do not know.

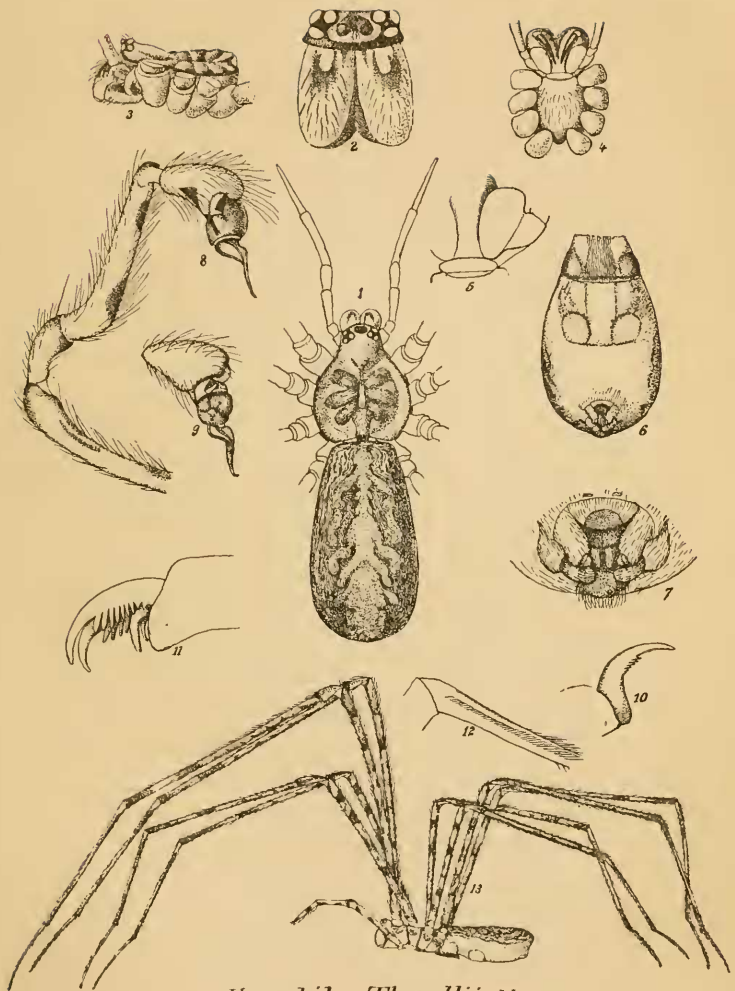
In July last I received, from the vicinity of Lookout Mountain, Tenn., a few males and females of a spider, which were collected in the forests of that mountainous region, where they had constructed, at the underside of projecting cliffs and rocks, large, white, saucer- or lampshade-like webs, in which they dwelt, assuming an inverted position, and shaking the web like a *Pholcus*, when one approaches.

This spider appeared at the first glance to be a *Pholcus* from its long, slender legs, the shape of the body and the arrangement of the eyes; but a closer study showed that it was an entirely new animal, with characters widely differing from any known spider, and yet combining in itself some of those characters upon which a certain number of families form a natural group, viz: *Dysderidae*, *Filistatidae* and the *Territelariæ*. Moreover, this spider brings into this group the *Pholcidae* and *Scytodidae*, since it possesses characters which belong to these families.

The principal and peculiar characters of this interesting spider are as follows: It has four true lamellar tracheæ or lungs like the *Territelariæ*. It has a cribellum and calamistrum like the *Filistatidae*. It has the nearly vertical mandibular claws and the male palpus, like the *Dysderidae*. It has the legs and body shape and the arrangement of the eyes of the *Pholcidae*.

But it is unlike the hitherto known *Territelariæ* in the presence of a cribellum and calamistrum, in the slenderness of the legs and in the shape of the body. It is unlike the *Filistatidae* from its four lungs, the position of the mandibular claws and the form of the labium. It is unlike the *Dysderidae* from the number of the eyes, the presence of the cribellum and calamistrum and the length of the tarsi. It is unlike the *Pholcidae* by the presence of four lungs, the cribellum and calamistrum and the direction of the mandibular claws.

The fact that our spider has four lungs places it at once in the



Hypochilus Thorellii. Marx.

© Marx 206

